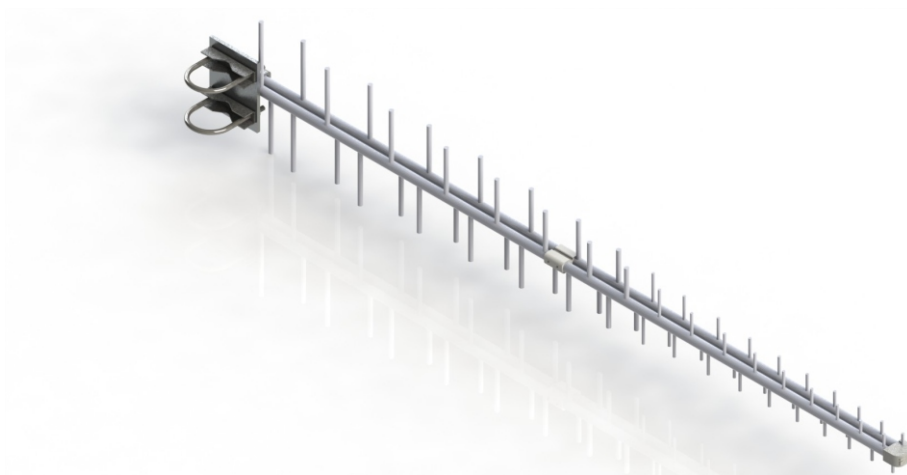


# ANTENA CELULAR QUAD-BAND

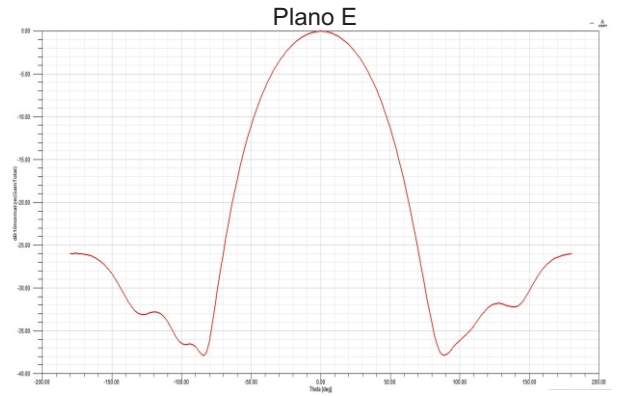
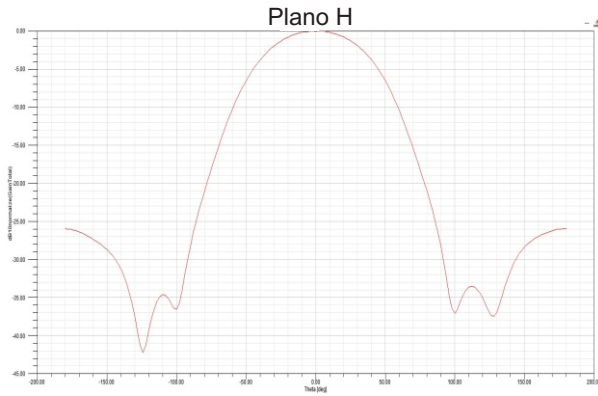
## CELULAR QUAD-BAND ANTENNA



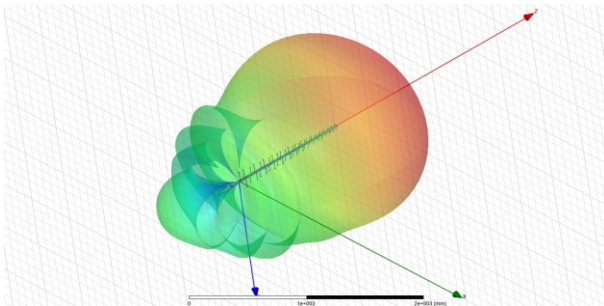
CÓDIGO	PQAG-4015		CODE
<b>ESPECIFICAÇÕES</b>			<b>SPECIFICATIONS</b>
<b>ELÉTRICAS</b>		<b>UNID. / UNIT</b>	<b>ELECTRICAL</b>
Faixa Frequencia	824~960/1710~1990	MHz	Frequency Range
Ganho	14/15	dBi	Gain
Relação Frente / Costas	> 26	dB	Front / Back Ratio
Ângulo Vertical	50/52°	Graus/Degrees	Vertical Beamwidth
Ângulo Horizontal	70/71°	Graus/Degrees	Horizontal Beamwidth
R.O.E	< 1.6 : 1		VSWR
Impedância	50	Ohms	Impedance
<b>MECÂNICAS</b>			<b>MECHANICAL</b>
Comprimento	1150	mm	Length
Peso	1140	g	Weight
Nº de Elementos	68		Number of Elements
Conectores	Tipo N fêmea /N Female Type		Connectors

**PQAG-4015**

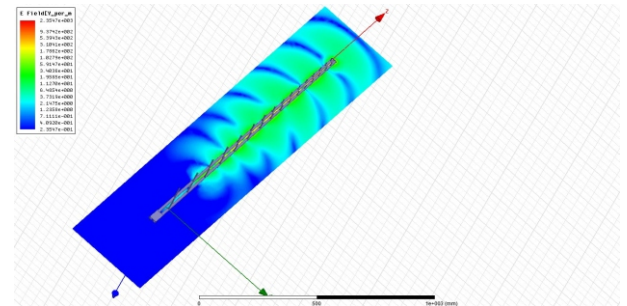
Diagrama de radiação



3D



Fluxo de campo eletromagnético



VSWR

